

CERTIFICATE OF LOCATION OF GOVERNMENT CORNER

EAST QUARTER Corner of Section 10, Township 105 N., Range 42 W., 5 th. P.M.

STATE OF MINNESOTA, County of MURRAY

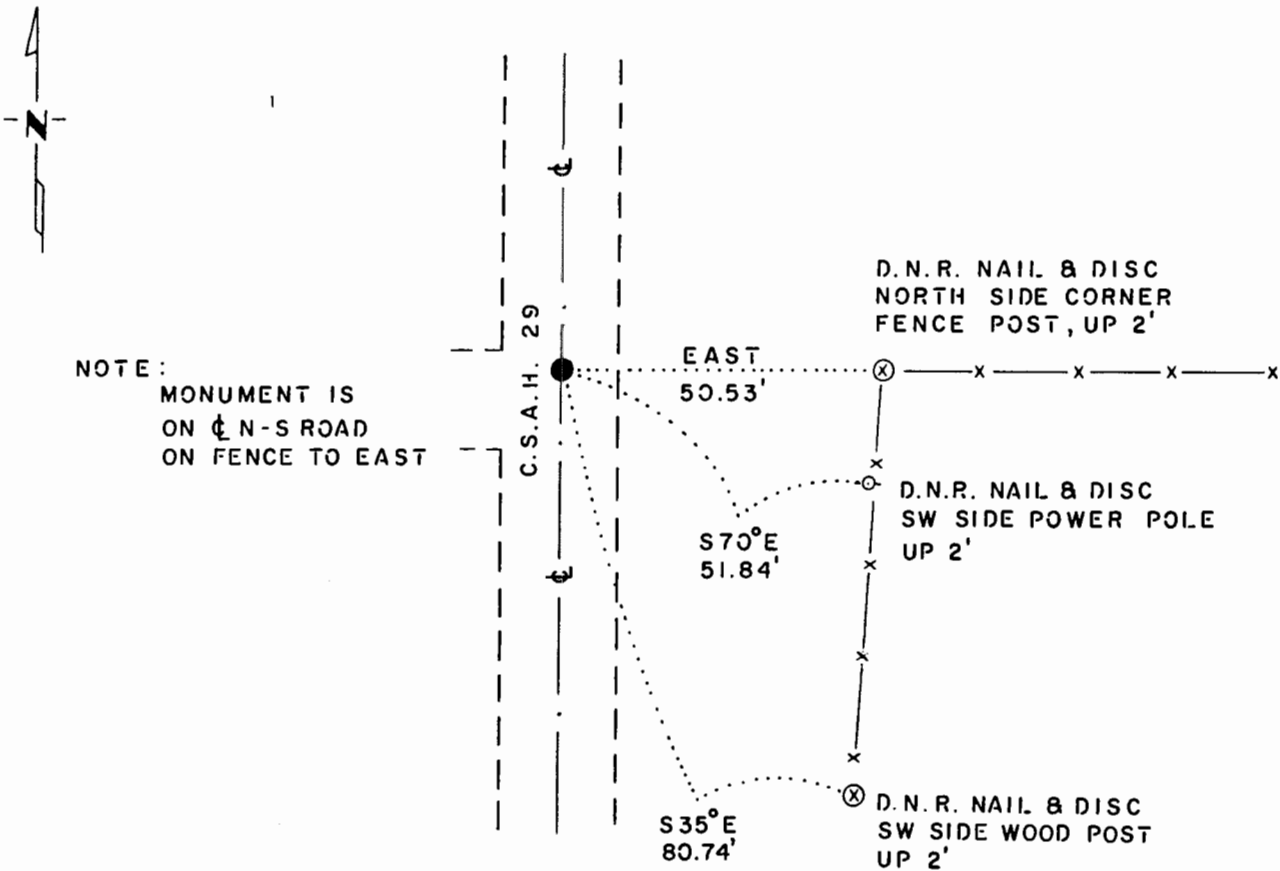
At the corner location shown on the sketch:

On 3-26-84 found a 1/2" IRON ROD, FLUSH
DATE

left monument as found, lowered monument, removed monument (explain)

On _____ placed a _____
DATE

SKETCH OF REFERENCE TIES



BEARINGS OBSERVED WITH COMPASS

Statement of evidence relative to this corner location is on back of page.

J. B. M. 5-14-84
G-1168

I hereby certify that this document and the data contained herein was prepared by me or under my direct supervision.

Bert R. Eme Land 10-5-84
SIGNATURE DATE

Registration No. 10516

- Land Surveyor, Professional Engineer
 County Surveyor, County Engineer

OFFICE OF THE COUNTY RECORDER
 County of Murray

I hereby certify that this document was filed in the Co. Recorders office at 10 A. M. on the 11th day of October A.D., 19 84

County Recorder Kevin J. Ohme

By _____, Deputy

DOCUMENT NO. 170428

East Quarter Corner Section 10, Township 105 North, Range 42 West

This corner was originally established by the U. S. General Land Office survey in 1861. The government notes show corner marked with a wood post set in mound of earth with pits and trench dug around the mound.

On March 21, 1984, the DNR Bureau of Engineering contacted the Murray County Offices of the Recorder and Highway Engineer for corner information.

The following information was obtained from the County Highway Engineer's Office:

In April 1971, the County Engineer's Office dug for this corner with a backhoe and found a 2 inch by 2 inch hub at the surface of old road 15 inches below old mat. Hub is likely an assumed corner for grading alignment, year 1953. Placed a ½ inch by 12 inch rebar over the center of hub and took the following ties:

- nail and cap - brace post of gate post, southwest, 60.22 feet
- nail and cap - brace post west, 51.35 feet
- nail and cap - power pole, southeast, 50.58 feet

In March 1984, the DNR Bureau of Engineering traversed to the area of the corner and found a ½ inch iron rod. Checked for, but did not find any county ties.

The DNR Bureau of Engineering accepts the iron rod as the location of the original government corner.

Traverse information is available from the DNR Bureau of Engineering.

State of Minnesota, }
County of Murray, } **55 170428**

I hereby certify that the within instrument was filed in this office for record on the 11th day of October A.D. 19 84,

at 10:00 o'clock A.M., and was duly recorded as Microfilm Document No. 170428



County Recorder